



Positioning Aids
Your partner in surgery



A Sense of Company

With more than 90 years of experience, SCHMITZ is one of the leading international manufacturers of medical products.

A family-owned business with a living tradition. Our typical employee has been with the company for some 18 years, proof of how strongly they identify with our values and philosophy.

In 2012, the company's management passed to Friedrich and Matthias Schmitz, the fourth generation of the family.

We are proud to be located in Germany and are deeply rooted in our home region. We develop and manufacture here.

90% of our suppliers are from Germany, of which 60% are from the local region.

Made in Germany





A Sense of Care

We understand the services which are our lifeblood, and aim to achieve maximum customer satisfaction. From consulting through planning to installation.

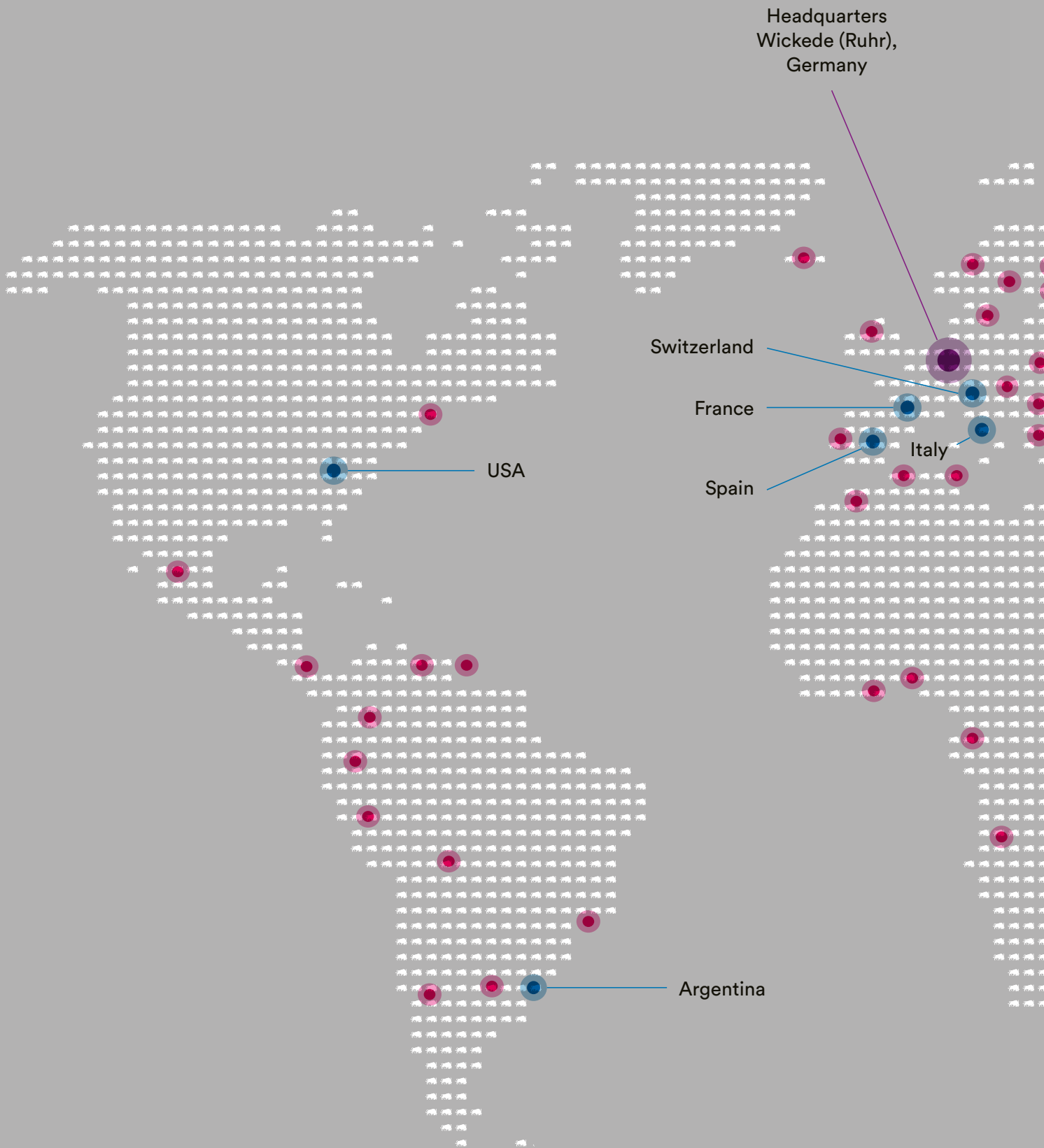
Cost-effectiveness through longevity is what you can expect from us.

With a well thought-out service concept and comprehensive support, SCHMITZ works alongside you as partner from start to finish.

Technical Customer Service

T +49 (0)2377 84 549

service@schmitz-medical.com



- Over 80 international trade partners
- Sales offices

SCHMITZ – represented worldwide





DIAMOND® and OPX mobilis® Positioning Aids

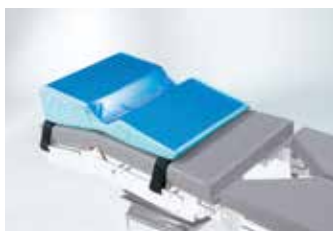
The ideal positioning of the patient provides the best possible access for surgical procedures.

Safety is a prerequisite for a successful intervention and reduction of risks for the patient.



Positioning aids

Model No. Description



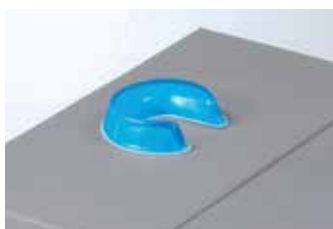
101.0327.0 KGEL Lateral positioner 700 × 500 × 170*
for safe lateral positioning, to relieve pressure on the shoulder joint and protect the nerve tracts, for surgical interventions on the hip, on the shoulder or on the kidney, 700 × 500 × 170 mm (W x D x H).



101.0328.0 Heel rest - pair 180 × 100 × 70*
to support the Achilles area and relieve pressure on the patient's heels during lengthy surgical procedures, 180 × 100 × 70 mm (W x D x H).



101.0329.0 Horseshoe head pad ADULT 200 × 70 × 50*
open, adult size, provides stability and protection to the patient's face during surgery in lateral position, Ø 200 × 50 mm.

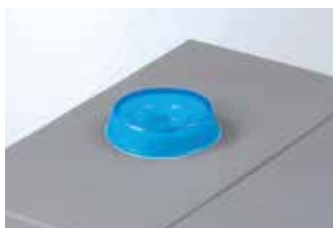


101.0331.0 Horseshoe head pad PEDIATRIC 140 × 70 × 30*
open, paediatric, provides stability and protection to the patient's face during surgery in lateral position, Ø 140 × 30 mm.



101.0332.0 Donut head pad ADULT 200 × 70 × 50*
closed, adult size, protects the head and ears during surgery in supine position, Ø 200 × 50 mm.

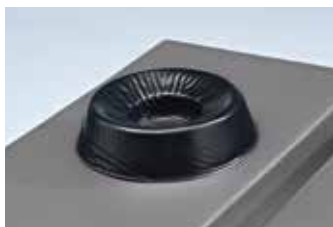
Model No. Description



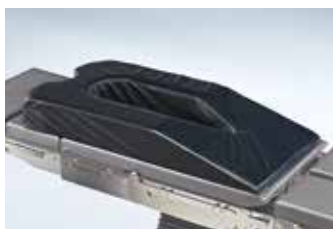
101.0333.0 Donut head pad PEDIATRIC 140 × 70 × 30*
closed, paediatric, protects the head and ears during surgery in supine position, Ø 140 × 30 mm.



101.0334.0 Ventral position head pad 280 × 240 × 140*
adult size, anatomically designed so that the patient's head can comfortably rest face down, outlets for ET tubes on both sides, 280 × 240 × 140 mm (W × D × H).



101.0336.0 Donut head pad NEONATAL 80 × 30 × 20*
closed, for infants, protects the head and ears during surgery in supine position, Ø 80 × 20 mm.



101.0355.0 Gel large prone positioner*
eliminates pressure on the abdomen and facilitates easy ventilation and circulation during long cases in prone position, 1,115 × 520 × 140 mm.

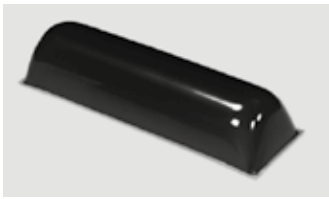
Positioning aids C€^{MD}

Model No. Description



101.0353.0 Operating table overlay 1,200 × 500 × 13*
1,200 × 500 × 13 mm.

101.0354.0 Operating table overlay 1,800 × 500 × 13*
(w/o ill.) 1,800 × 500 × 13 mm.



101.0339.0 Chest roll 500 × 150 × 100*
adult size, 500 × 150 × 100 mm.



101.0346.0 Patient positioners - SMALL 330 × 70 × 50*
330 × 70 × 50 mm.

101.0347.0 Patient positioners - MEDIUM 250 × 120 × 50*
250 × 120 × 50 mm.

101.0348.0 Patient positioners - LARGE 330 × 120 × 60*
330 × 120 × 60 mm.

Model No. Description



101.0343.0 Gel arm retainer pad*
to fit acrylic arm protector 101.0153.0,
157 × 128 × 15 mm.



101.0344.0 Sacrum support 440 × 420 × 30*
to provide support in the supine and lithotomy
positions, adult size, 440 × 420 × 30 mm.



101.0211.0 Cushion
antistatic covered foam pad, semicircular,
240 × 120 × 475 mm (W x H x L).



101.0208.0 Plexus cushion*
for supine patient positioning, designed to prevent
brachial plexus paralysis and to stabilize the head,
440 × 500 × 100 mm (W x D x H).

Positioning aids C€^{MD}

Model No. Description



101.0352.0 Tunnel Pad with Kgel protection 640 × 460 × 200*
for lateral patient positioning, adult size,
640 × 460 × 200 mm.



101.0341.0 CONTOURED ARMBOARD PAD 500 × 150 × 40*
contoured, adult size, 500 × 150 × 40 mm.

101.0342.0 CONTOURED ARMBOARD PAD 400 × 150 × 40*
(w/o ill.) contoured, for adolescents, 400 × 150 × 40 mm.

101.0337.0 Dorsal head pad 290 × 285 × 70*
(w/o ill.) adult size, ergonomically shaped to position
the patient's head during eye surgery and other
supine procedures, 290 × 285 × 70 mm.

101.0338.0 Gel supine head rest*
(w/o ill.) same as 101.0337.0, for adolescents in supine position,
275 × 230 × 65 mm.



Model No.	Description
101.0015.0	Pad* for intervertebral disc operations, two-sectional for individual adaptation to the patient's body size, radiolucent, antistatic. Thoracic cushion 500 × 250 × 160 mm (W x D x H), pelvic cushion 500 × 340 × 160 mm (W x D x H).



Positioning aids C€^{MD}

Model No.	Description
-----------	-------------

101.0749.0	Vacuum mattress, standard*
-------------------	-----------------------------------

(w/o ill.)

Suitable for all standard procedures in the supine position that require stable patient positioning. Optimised pressure relief thanks to MicroSpace filling with virtually untextured surface, including non-slip mat.
2,000 mm x 1,000 mm (L x W)



101.0549.0	Vacuum mattress, SigmaLap*
-------------------	-----------------------------------

Suitable for laparoscopic sigma resections, allows patients to be positioned in a lithotomy position with arms by side and in extreme head-down position. Optimised pressure relief thanks to MicroSpace filling with virtually untextured surface, including non-slip mat.
1,250 mm x 750/1,000 mm (L x W)



Contact

SCHMITZ medical GmbH
Zum Ostenfeld 29
58739 Wickede (Ruhr)

T +49 (0)2377 84 0

F +49 (0)2377 84 162

zentrale@schmitz-medical.com

Exports department:

T +49 (0)2377 84 0

F +49 (0)2377 84 135

export@schmitz-medical.com

Technical service, hotline:

T +49 (0)2377 84 549

F +49 (0)2377 84 210

service@schmitz-medical.com

Information on our
establishments worldwide
can be found

on our website:

www.schmitz-medical.com



All devices marked with the CE-MD symbol, in combination with our accessories, meet the requirements of Medical Device Regulation 2017/745/EU (MDR) as well as the Medical Device Amendment Act and are risk class I medical devices.



All devices marked with the simple CE symbol meet the requirements of low-voltage directive 2014/35/EU as well as the regulation on electrical equipment.

Please also refer to the instructions for use, for more details about the intended use!



* This product is an article of merchandise, sold under OEM brand name.

Our goods and services are to be understood ex works. Deliveries are effected via our authorized partners or branch offices. The company reserves the right to alter the design, construction, dimensions and finish of its products without notice. All relevant dimensions and weights are to be understood as approximate information/ data. Due to technical reasons colour deviations are possible. The patient positionings shown in this catalogue are only exemplary and make no claim to the correctness and/or completeness of the accessories, please observe the instructions for use in any case.

The articles shown in this catalogue are not authorized for sale in the United States.

Nominal charge 2.50 Euro.